

## Case Study

# ATURA HOTEL

## PROJECT DESCRIPTION

Atura Wellington, located in the heart of New Zealand's capital city, offers modern, digitally convenient accommodation for both business and leisure travellers. With 110 rooms, conference facilities, and Frankie's Bar + Eatery, the hotel is an ideal destination for those seeking comfort and style in Wellington. The hotel is committed to enhancing guest experience while also reducing its environmental impact.

## PROJECT REQUIREMENTS & CHALLENGES

As part of its sustainability efforts, Atura Wellington upgraded its domestic hot water system to improve efficiency and eliminate reliance on gas. This change aligns with their goal of reducing operational costs and minimizing their carbon footprint.

The hotel previously used five 44 kW gas-fueled cylinders to meet its hot water needs, including the kitchen and laundry systems. The gas cylinders, however, were becoming costly to operate and maintain. The hotel needed a more efficient, environmentally friendly alternative that could handle its daily hot water demand while cutting energy costs.

### PROJECT DETAILS

Atura Hotel  
Wellington, NZ

### COMPLETION DATE

April 2023

### SYSTEMS INSTALLED

2 x Q-ton Air-to-Water System  
3 x 1,000L Stainless Steel Tanks

### MHI REPRESENTATIVE

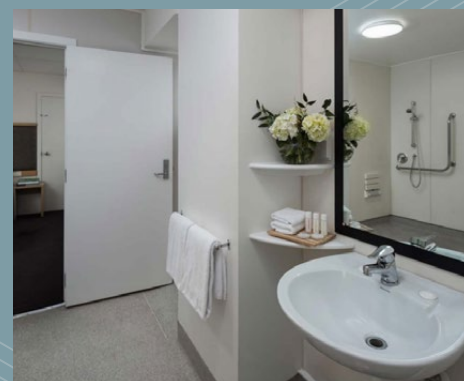
Eddie Van Heerden  
+64 9 525 3019



## MHI'S SOLUTION

Mitsubishi Heavy Industries installed two 30 kW Q-ton air-to-water heat pumps along with 3,000 litres of hot water storage. The Q-ton system is renowned for its high efficiency, especially in providing reliable hot water at temperatures between 60°C and 90°C. The system's coefficient of performance (COP) of 4.5 allows it to operate at over 650% greater efficiency than the decommissioned gas system.

By integrating the hotel's kitchen dishwashers and laundry systems into the new setup, the Q-ton system not only replaced the old gas units but also eliminated the need for gas supply entirely, resulting in substantial cost savings and environmental benefits for the hotel.





[mhiheatpumps.co.nz](http://mhiheatpumps.co.nz)

New Zealand:

Auckland

G.S.T. 105-673-620

Phone: 0800 138 007

95 Manukau Road, Epsom, Auckland, 1023

Mitsubishi Heavy Industries Air-conditioners Australia, Pty. Ltd.  
New Zealand Branch

MOVE THE WORLD FORWARD  **MITSUBISHI  
HEAVY  
INDUSTRIES  
GROUP**